

St. Lukes Street, SW₃

**RUSSELL
SIMPSON**

Approximate Internal Area

2,304 sq ft/ 214 sq m

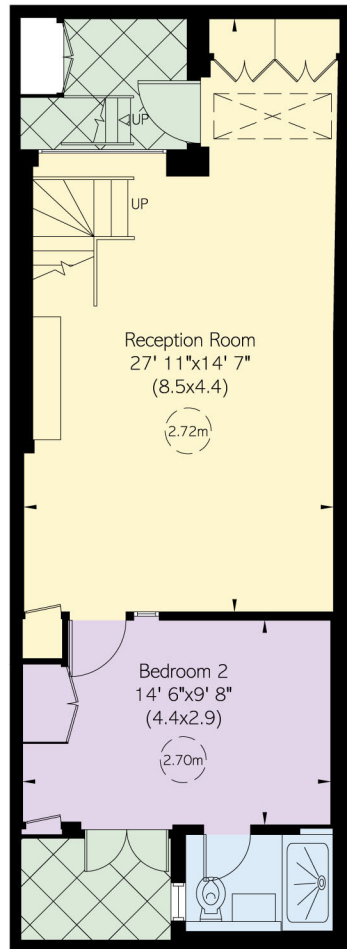
Including limited use area

21 sq ft/ 2 sq m

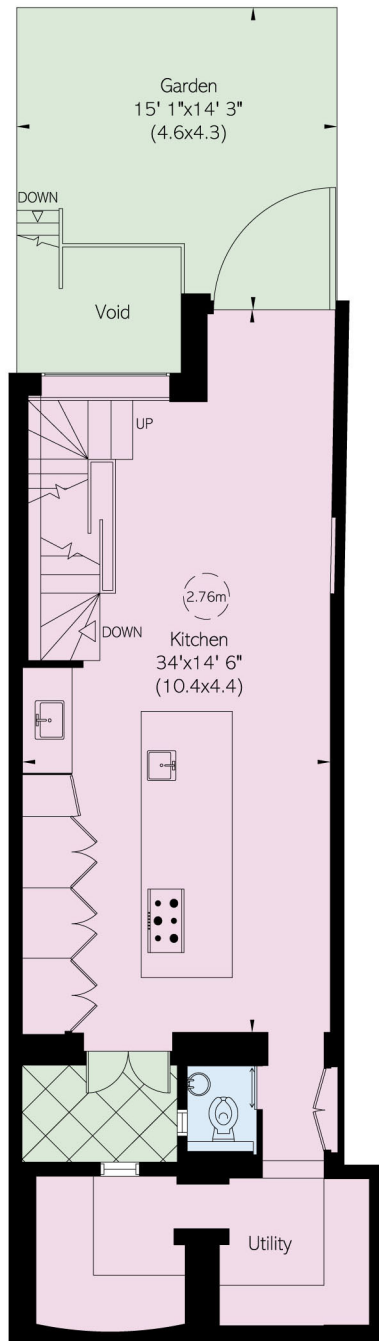
Outside Area

409 sq ft/ 38 sq m

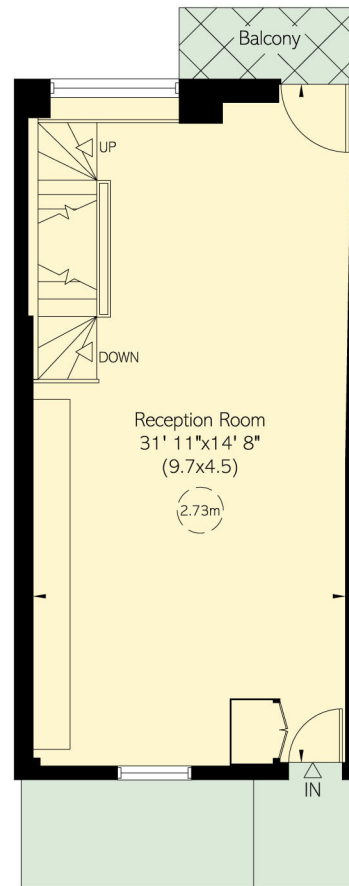
This plan is for layout guidance only. Not drawn to scale unless stated. Windows and door openings are approximate. Whilst every care is taken in the preparation of this plan, please check all dimensions, shapes, and compass bearings before making any decisions reliant upon them.



Basement

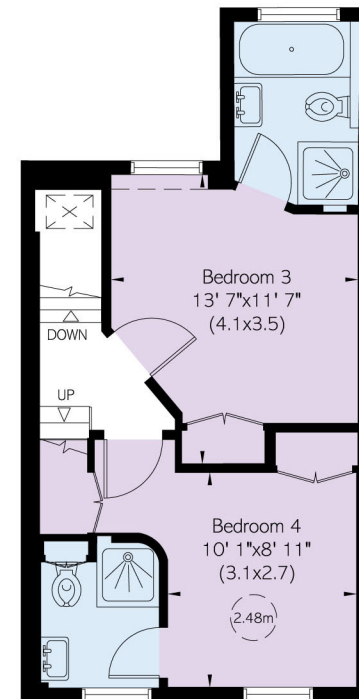


Lower Ground Floor

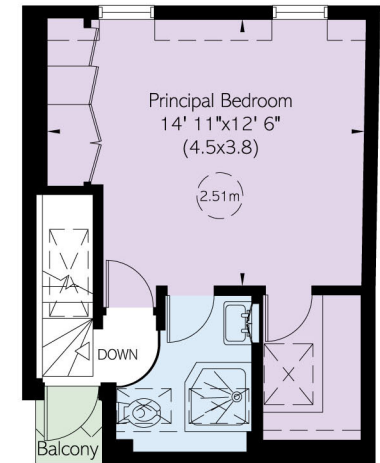


Ground Floor

Reduced head height below 1.5m



First Floor



Second Floor