



48 WEST 85TH STREET

UPPER WEST SIDE

LESLIE
GARFIELD

48 WEST 85TH STREET

MODERN LUXURY MEETS TIMELESS
BROWNSTONE CHARM

Welcome to 48 West 85th Street — a stunning, newly renovated triple mint single-family townhouse located on a tree-lined Central Park block. This six-story home plus finished roof deck combines timeless Upper West Side charm with sleek, modern luxury. An elevator serves every floor, including the rooftop.


PRICE

\$21,750,000

NEIGHBORHOOD

Upper West Side, Manhattan

ROOMS

 6  6

 6+  1

SQUARE FOOTAGE

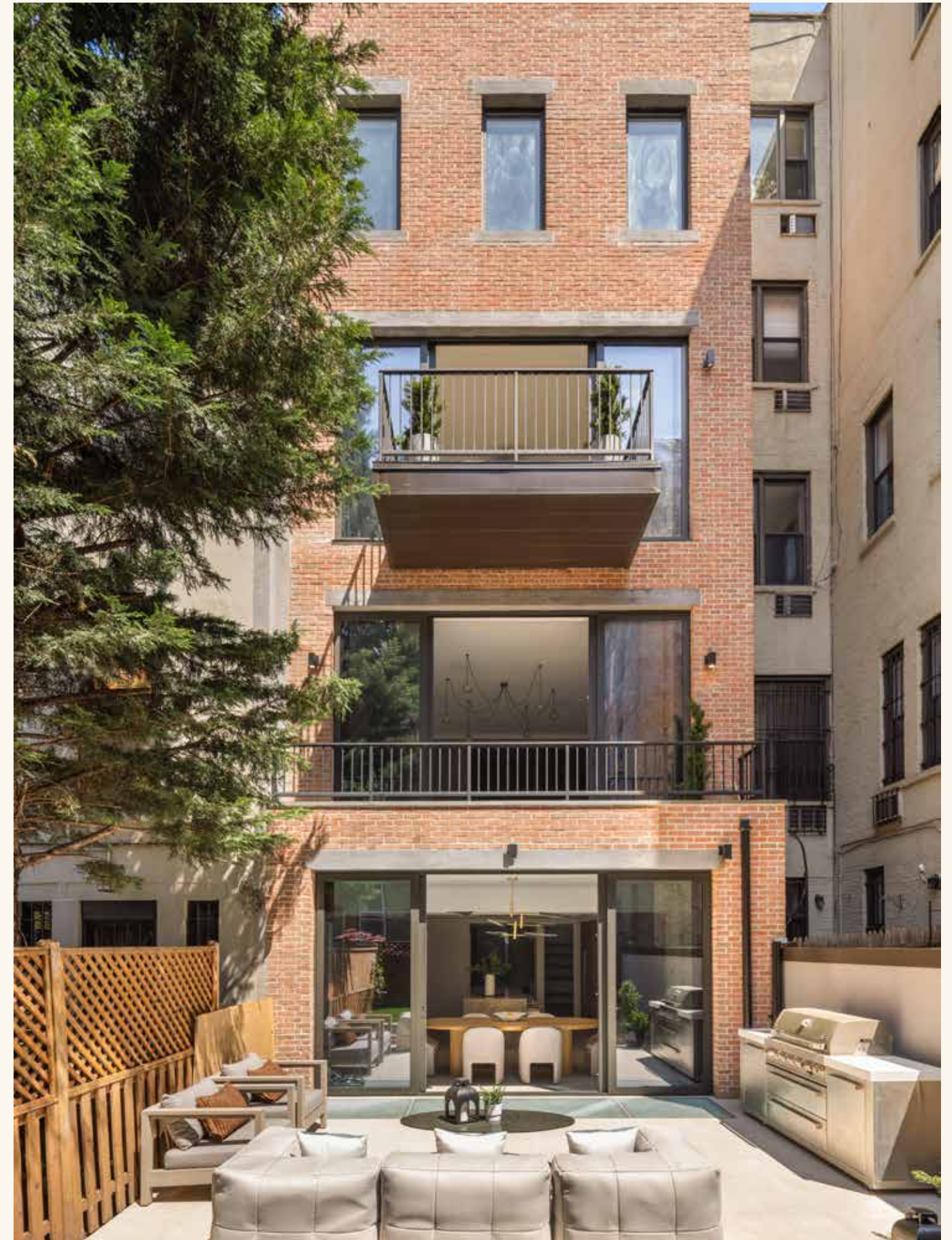
8,000 (approx.)

PLOT

20' x 102.17'

FEATURES

- + 6 stories plus finished roof deck
- + Elevator serving all floors, including rooftop
- + Eat-in kitchen with top-of-the-line appliances and finishes
- + Landscaped private garden with built-in BBQ





PARLOR LEVEL

Through the classic stoop entryway, the parlor level offers grand living and formal dining rooms, perfect for entertaining. This level also includes a beautifully appointed butler's kitchen, complete with warming drawers, a wet bar, and a wine cooler — ideal for hosting.





LESLIE GARFIELD — 48 WEST 85TH STREET

EAT-IN KITCHEN



Downstairs, the garden level features a casual secondary entrance with a mudroom, a family room, and a bright eat-in kitchen outfitted with top-of-the-line appliances and finishes, including Dornbracht hardware, a Sub-Zero refrigerator and separate Sub-Zero freezer, a 48-inch Wolf gas rangetop, and floor-to-ceiling sliding glass doors that open to a beautifully landscaped private garden with built-in BBQ.





PRIMARY SUITE

The third floor is dedicated to the primary suite, complete with a terrace, generous closets, and an adjoining office or sixth bedroom with a full ensuite bath. The primary bathroom is finished in luxurious Italian tilework and marble, creating a serene, spa-like retreat.





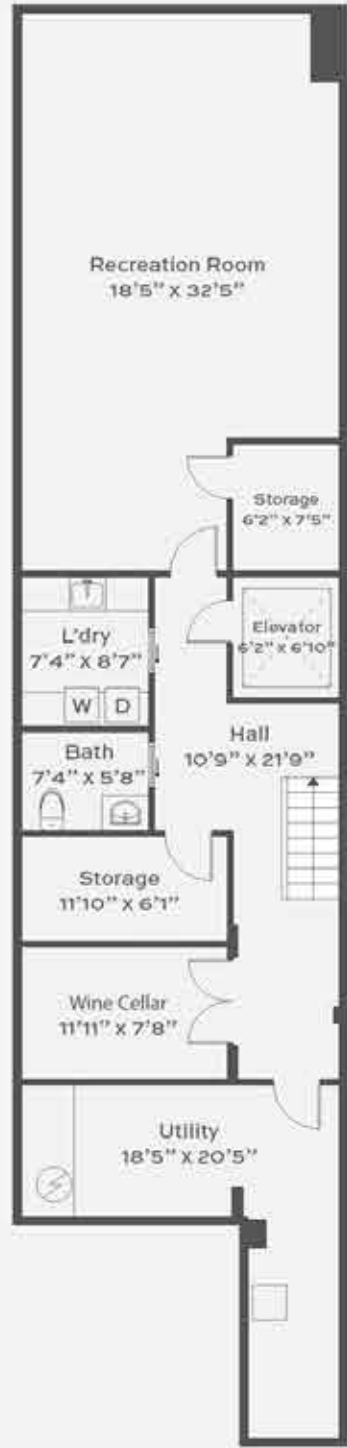


UPPER WEST SIDE

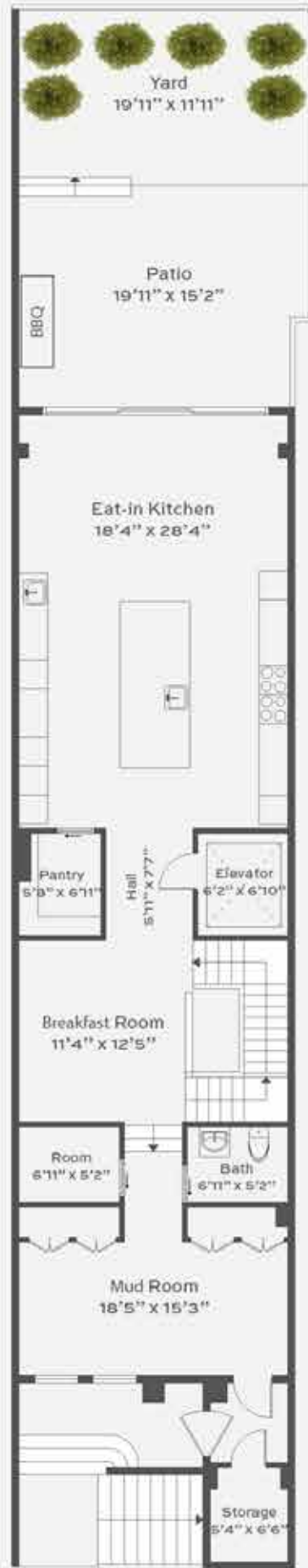
Located just steps from Central Park, this neighborhood includes top Manhattan schools, restaurants, shopping, and cultural institutions—offering the best of Upper West Side living.



FLOORPLAN



Cellar
Ceiling Height 11'5"



Garden Level
Ceiling Height 9'4"



Parlor Level
Ceiling Height 10'2"



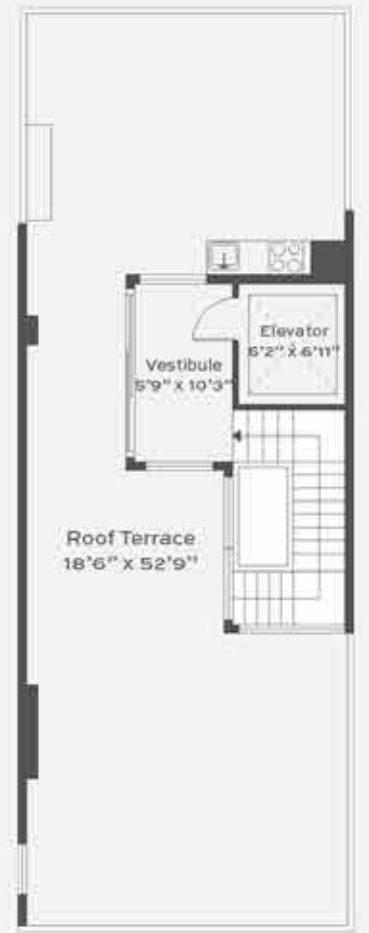
Third Floor
Ceiling Height 10'2"



Fourth Floor
Ceiling Height 10'2"



Fifth Floor
Ceiling Height 10'2"



Roof

Sales & Advisory Team



Richard Pretsfelder
212-574-6965
RDP@lesliegarfield.com



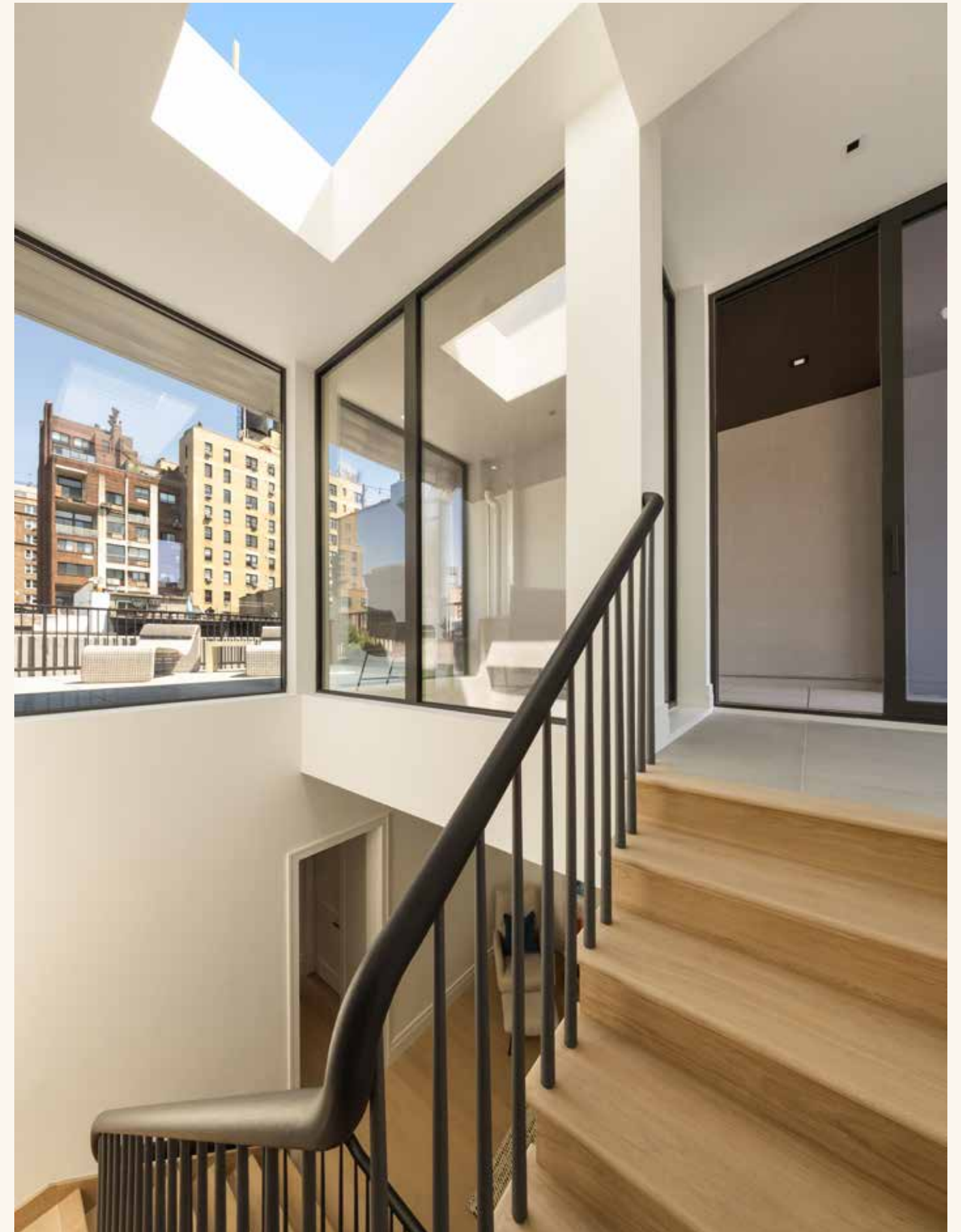
Tom Wexler
212-448-7474
TW@lesliegarfield.com



Sophie Smadbeck
212-574-6970
SS@lesliegarfield.com



Morgan Garofalo
212-574-6975
MG@lesliegarfield.com



LESLIE GARFIELD

Specializing in
New York City Townhouses

505 Park Ave. Suite 303
New York, NY 10022

+1 (212) 371 - 8200
lesliegarfield.com

122 Montague Street, 2nd Floor
Brooklyn, NY 11201

All information provided by us has been secured from sources we believe to be reliable, but we make no representations or warranties, expressed or implied, as to the accuracy of the information. References to square footage or age are approximate. Buyers must verify all information and bear the risk for any inaccuracies. Any projections, opinions, assumptions or estimates used herein are for example purposes only and do not represent the current or future performance of the property