

15 GAY STREET

LESLIE
GARFIELD

15 GAY STREET

Step into the storybook charm of 15 Gay Street, a rare Greenwich Village townhouse where timeless architecture meets a rich, bohemian past. Built in 1910, this four story, four-residence walk-up spans approximately 3,344 square feet on a 1,235-square-foot lot, blending classic craftsmanship with a sense of place that's uniquely New York.

Tucked away on one of Manhattan's shortest and most winding lanes, Gay Street curves gracefully between Christopher Street and Waverly Place-an intimate passage lined with 19th-century elegance. Federal-style brick facades from the 1820s and 1830s greet you on one side, while Greek Revival designs from the mid-1800s stand proudly on the other.

Every step along its cobblestones hums with history: once home to Black musicians and Village creatives, later a discreet destination for speakeasies during Prohibition, and now celebrated as part of the Stonewall National Monument. Delivered vacant, 15 Gay Street presents a rare Greenwich Village townhouse opportunity to convert this property into a single-family home, live with income, or continue to use as a prime location income producer.

Location Christopher Street & Waverly Place

Lot Dimensions 19' x 65' (Built 44' deep)

Stories Four (4) + Cellar

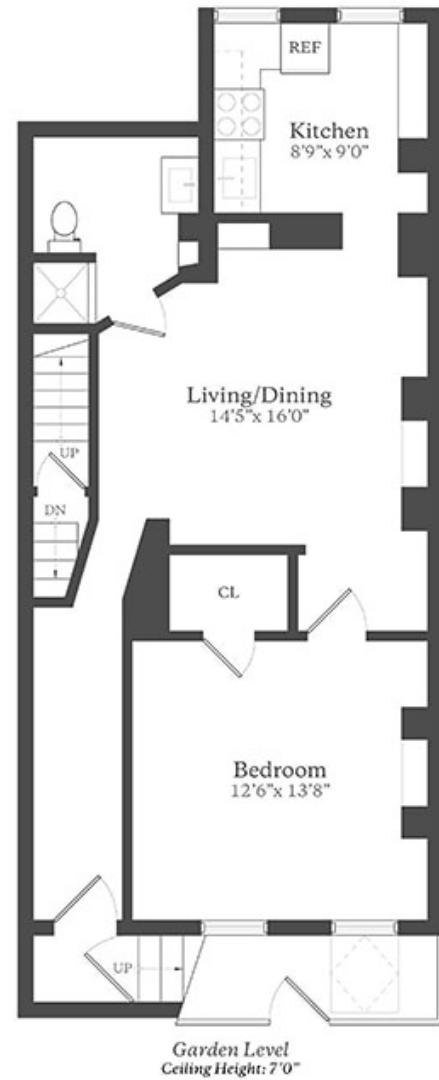
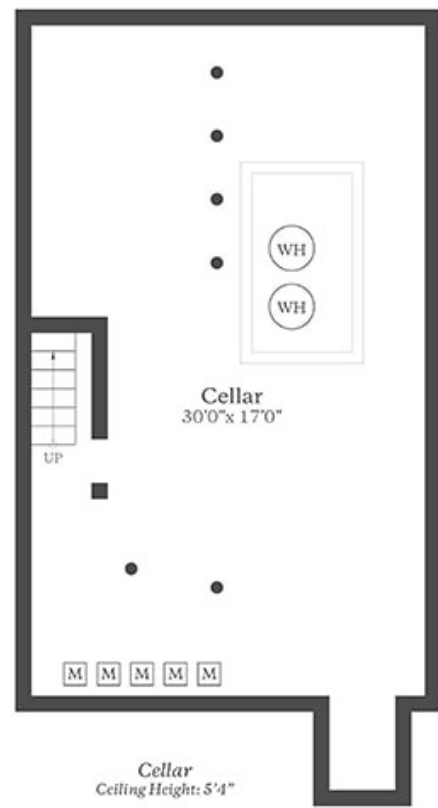
Appx. SqFt 3,344 Sq.Ft.

Annual Taxes \$44,326





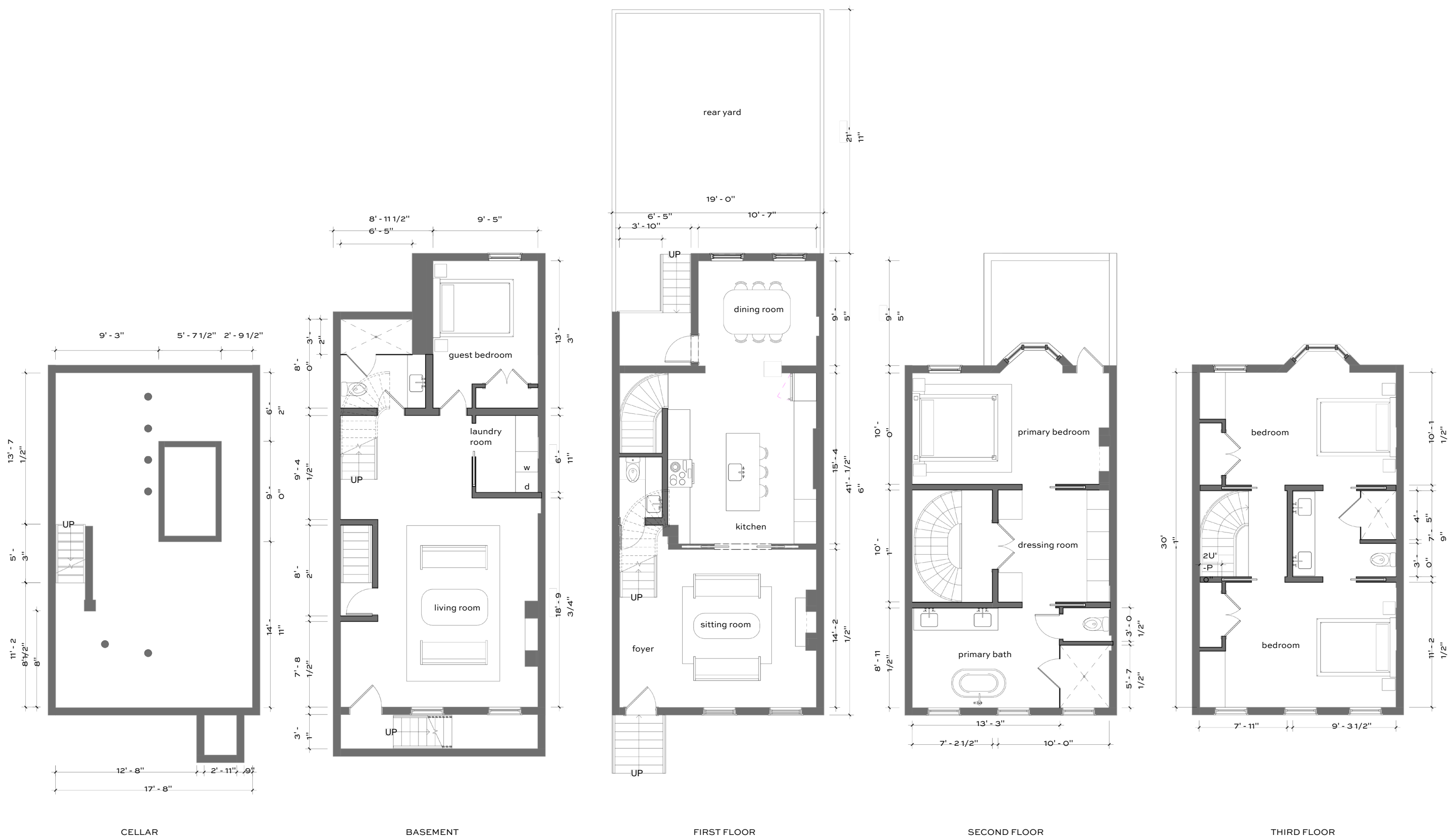




15 Gay Street

Floor plan measurements and drawing are approximate and for illustrative purposes only. There is no guarantee, warranty or representation as to the accuracy and completeness of this floor plan.

LESLIE
GARFIELD



15 Gay Street

Proposed Single Family Plans

Floor plan measurements and square footages are approximate and are for illustrative purposes only. There is no guarantee, warranty or representation as to the accuracy and completeness of the floor plan.

Sales & Advisory Team



Matthew Lesser
212-574-6959
ML@lesliegarfield.com



Matthew Pravda
212-574-6969
MP@lesliegarfield.com



Tori Landon
212-574-6971
TL@lesliegarfield.com



505 Park Avenue
Suite 303
New York, NY 10022

All information provided by us has been secured from sources we believe to be reliable, but we make no representations or warranties, expressed or implied, as to the accuracy of the information. References to square footage or age are approximate. Buyers must verify all information and bear the risk for any inaccuracies. Any projections, opinions, assumptions or estimates used herein are for example purposes only and do not represent the current or future performance of the property