

The Draycott, Draycott Avenue, SW₃

**RUSSELL
SIMPSON**

Approximate Internal Area

2,973 sq ft/ 276 sq m

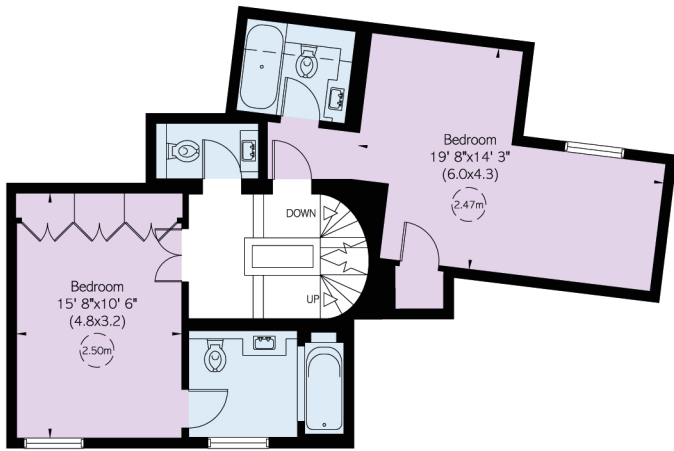
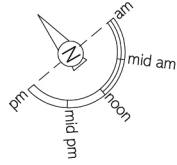
Including limited use area

14 sq ft/ 1 sq m

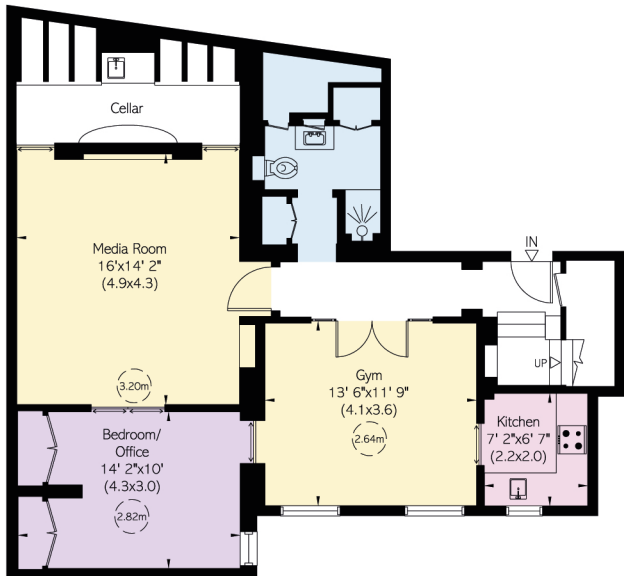
Outside Area

1,436 sq ft/ 133 sq m

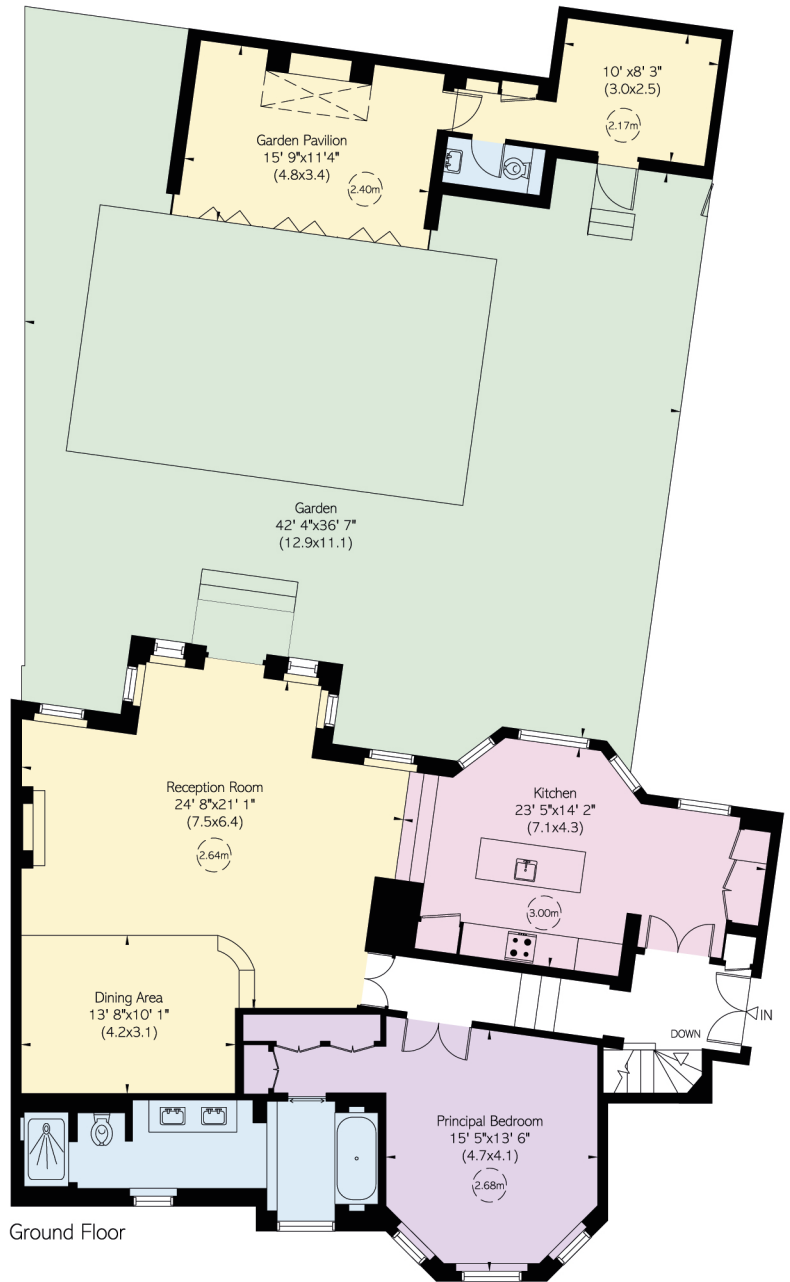
This plan is for layout guidance only. Not drawn to scale unless stated. Windows and door openings are approximate. Whilst every care is taken in the preparation of this plan, please check all dimensions, shapes, and compass bearings before making any decisions reliant upon them.



Lower Ground Floor



Basement



Ground Floor