



305 EAST 48TH  
STREET

LESLIE  
GARFIELD

# 305 East 18th Street

## PRICE

Price Upon Request

## NEIGHBORHOOD

Gramercy Park

## ROOMS



4/5



2/2



4+



4

## FEATURES

- + Grand Stoop Entry
- + 20'-wide
- + Grandiose Ceiling Heights
- + Preserved Period Details Throughout
- + Well Maintained Single-Family w/ Office







## 305 EAST 18TH STREET

Located steps from some of downtown's most iconic treasures - including Gramercy Park, Union Square, and Stuyvesant Square Park - this home sits on a beautiful, tree-lined townhouse block shared with 33 other townhouses. This 20-foot-wide, four-story townhouse spans approximately 3,200 square feet and is currently configured as a live-work residence for the current owners but can be easily recreated into a single-family home. The grand stoop entry opens into an airy parlor floor with soaring ceiling heights, where period details remain intact, including crown moldings, two marble mantels, original door frames, and a wood balustrade and banister.







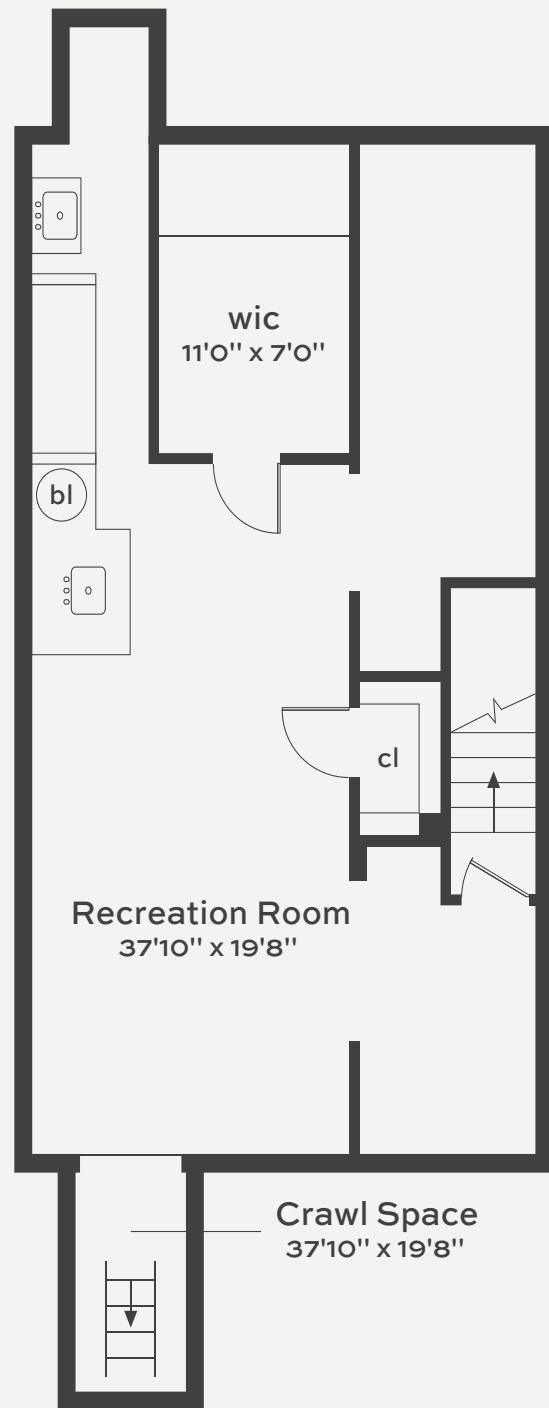
## 305 EAST 18TH STREET

The third level includes two bedrooms and two bathrooms. The primary suite is positioned at the front and features a recently renovated en-suite bath and a three-windowed façade that floods the room with natural light. The rear bedroom, currently used as a dressing room and office, offers generous space and flexibility.

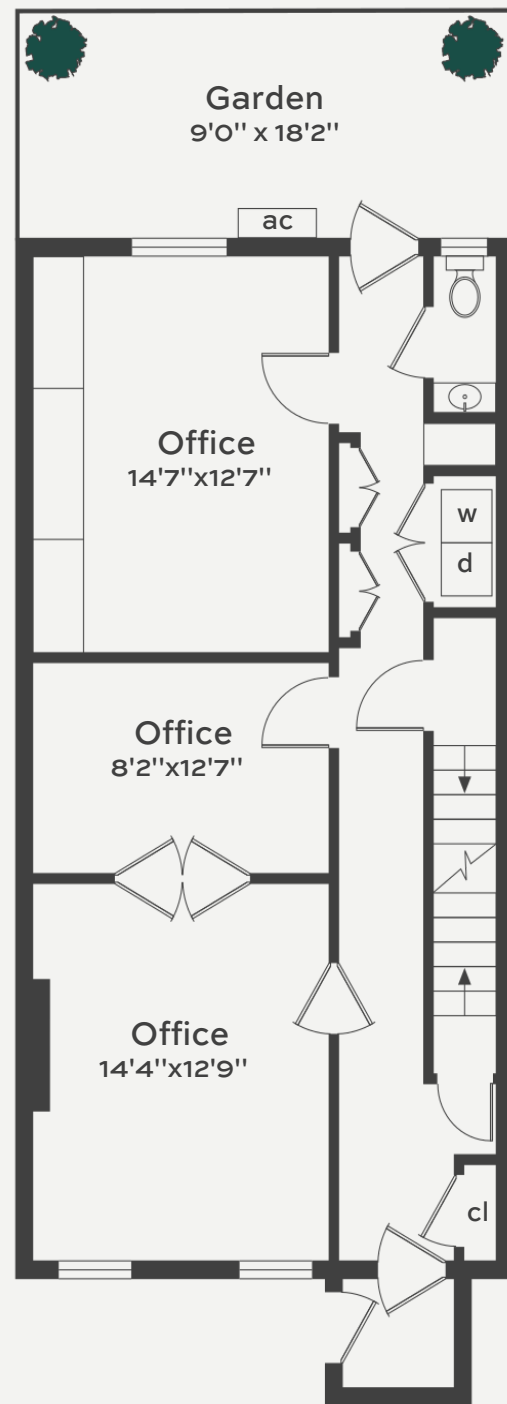
The top floor hosts three additional bedrooms and a recently updated full bathroom. The garden level functions as private home office space with laundry facilities and direct access to the rear garden, which also houses the HVAC equipment.



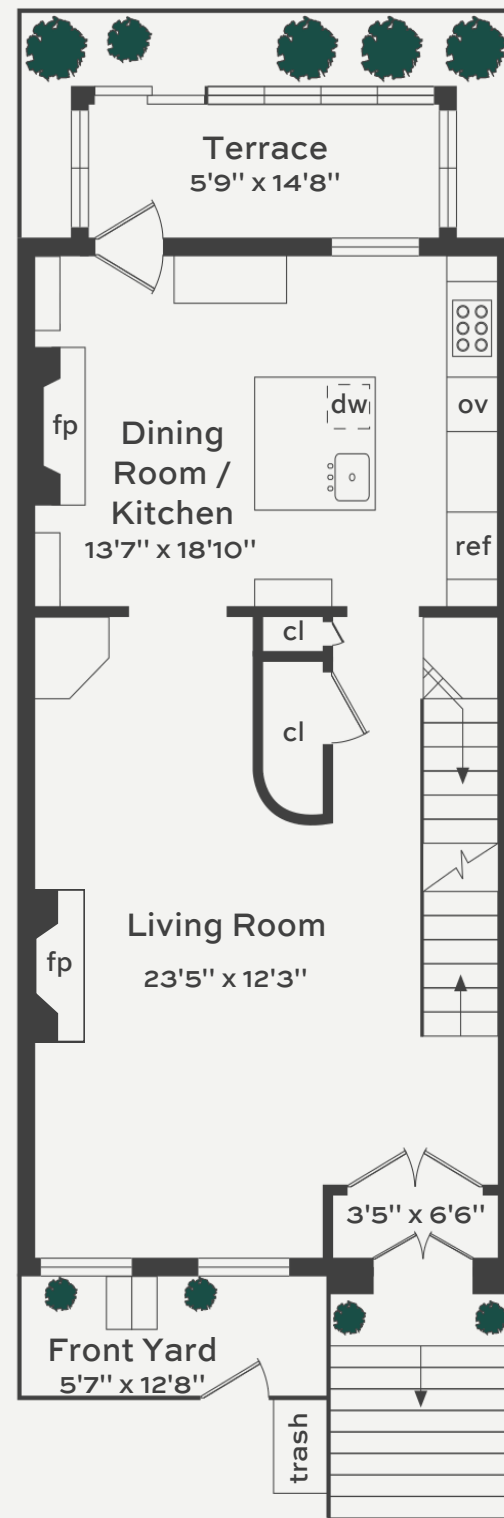




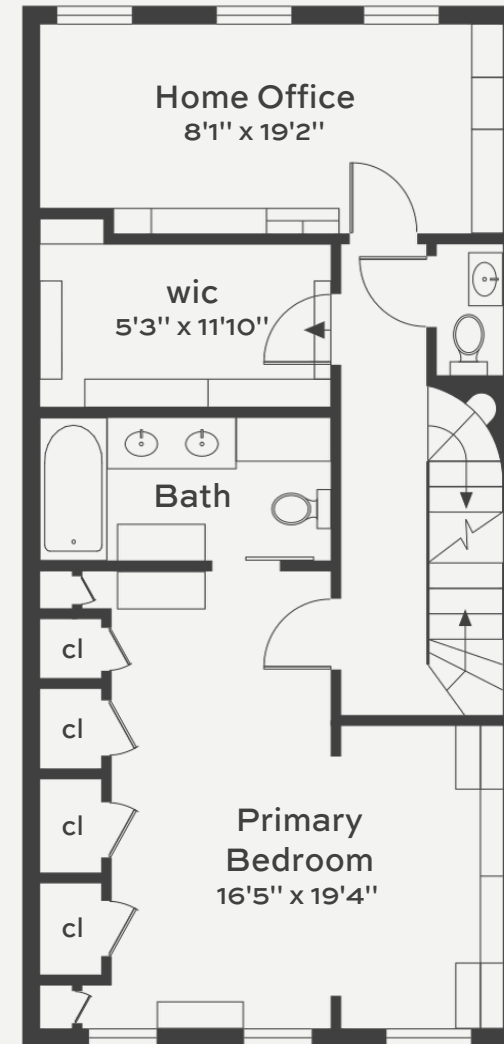
Cellar  
Ceiling Height 7'1"



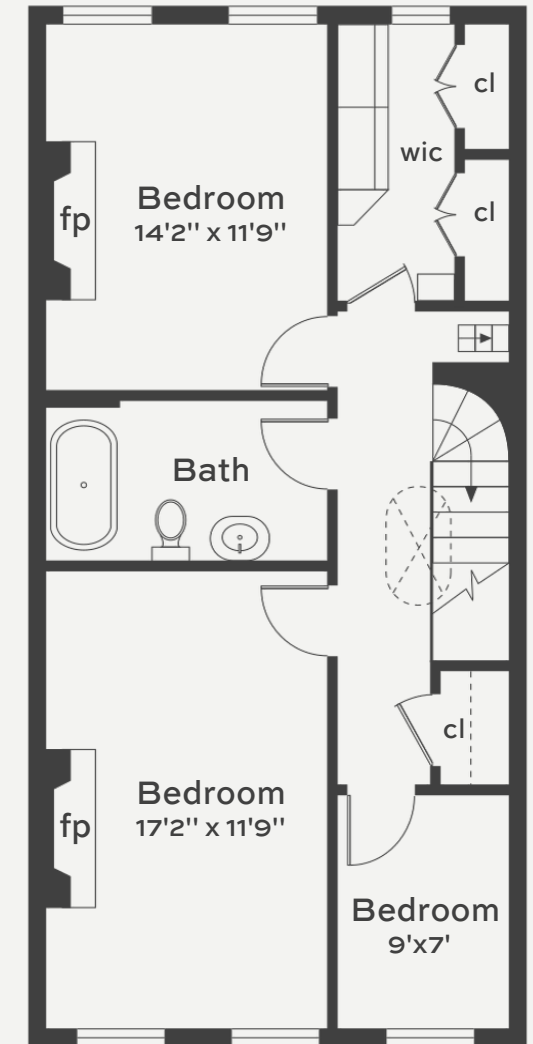
Commercial / Garden Level  
Ceiling Height 8'0"



Parlor Level  
Ceiling Height 10'10"



Third Floor  
Ceiling Height 10'0"



Fourth Floor  
Ceiling Height 9'9"

# Sales & Advisory Team



**Matthew Lesser**  
212-574-6959  
ML@lesliegarfield.com



**Tori Landon**  
212-574-6971  
TL@lesliegarfield.com



505 Park Avenue  
Suite 303  
New York, NY 10022

All information provided by us has been secured from sources we believe to be reliable, but we make no representations or warranties, expressed or implied, as to the accuracy of the information. References to square footage or age are approximate. Buyers must verify all information and bear the risk for any inaccuracies. Any projections, opinions, assumptions or estimates used herein are for example purposes only and do not represent the current or future performance of the property